

Location:



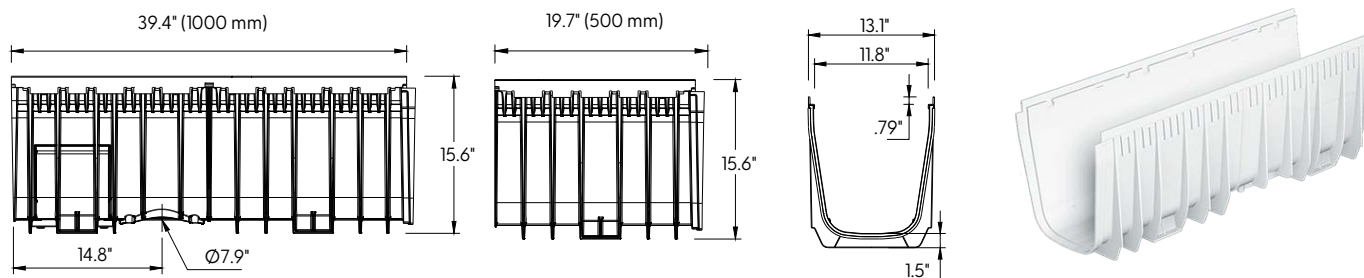
T3000-PB with No Edge Rail



Specification:

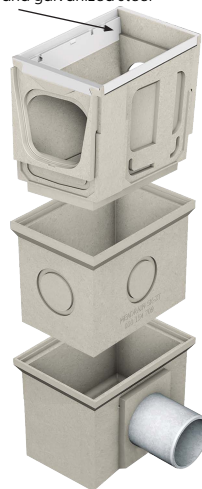
MIFAB®'s T3000-PB series channels shall be 39.4" (1000 mm) long with a 12" (300 mm) internal width and radius bottom. Interconnecting channel sections are made of high strength Glass Fiber Reinforced Polyester (GRP) and available in non-sloping (neutral) channels. Each channel comes with no edge rail. Directional Change Channels available at neutral locations.

Installation devices, plastic end cap/outlet cap, catch basins and bottom outlets are available accessories. Grates (separate Specification Sheets) are available in in Load Class A-C in a variety of materials. Grates utilize the patented "Clipfix" locking mechanism.



T3000-CB1220 CATCH BASIN Sediment bucket included

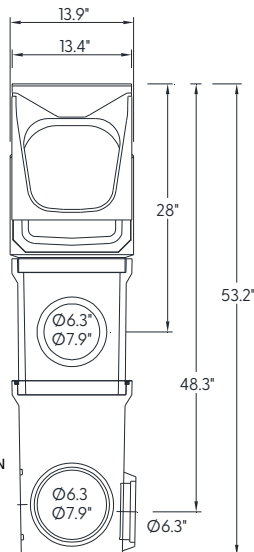
Edge rails available in GRP
and galvanized steel



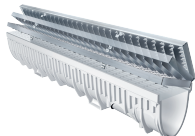
CATCH BASIN
TOP ASSEMBLY

CATCH BASIN
OPTIONAL EXTENSION

6\"/>



CHANNEL MODEL NUMBER	BODY TYPE Neutral - 0%	INVERT BODY DEPTH		OVERALL BODY DEPTH		MAXIMUM FLOW RATE	WEIGHT (LESS GRATE)
		E1 MIN.	E2 MAX	E1 MIN.	E2 MAX		
T3000N-PB	Neutral	14.17"	14.17"	15.63"	15.63"	1119.03	26.01
T3000N-PB-500	Neutral	14.17"	14.17"	15.63"	15.63"	1119.03	15.12
T3000N-PB-500-DC	Neutral	14.17"	14.17"	15.63"	15.63"	1119.03	15.12



CLIPFIX ADVANTAGE

The MEA Glass Fiber Reinforced Polyester (GRP) channels have been designed for our universal CLIPFIX grate locking mechanism. The system (channel and grate) provides longitudinal shift protection.

Job Name: _____

Page No: _____

Section No: _____

Contractor: _____

Schedule No: _____

Purchase Order No: _____

Revision Date: 2022/02/10

CALIFORNIA PROPOSITION 65 WARNING. This product contains chemicals known to the State of California to cause cancer and birth defects or other reproductive harm.

MIFAB reserves the right to make changes in material and design without formal notice and obligation.

USA: 1-800-465-2736 www.mifab.com CAN: 1-800-387-3880